



FROM THE FIRST TOOTH

HEALTHY SMILES FOR LIFE



ANNUAL UPDATE

• • • 2022 • • •

SUPPORTED BY



Children's
Oral Health
Network
of Maine



**Sadie & Harry
Davis Foundation**

A KLINGENSTEIN PHILANTHROPY

MaineHealth



**Northern Light
Health**SM



MaineGeneral Health



DENTAL CARE IS HEALTHCARE.

From the First Tooth (FTFT) continues to move medical dental integration forward within the state of Maine. For the last 13 years, FTFT has integrated oral health evaluations, fluoride varnish application, parent and caregiver education, and referrals to a dental provider into the well-child visit. Currently, 139 primary care practices serving pediatric patients implement the FTFT program in all of Maine's 16 counties. This work would not be possible without the generous support from the Sadie and Harry Davis Foundation and Children's Oral Health Network of Maine.

2022 Reflections

2022 was an incredibly busy year for the FTFT program. FTFT continued to strengthen and forge new partnerships, outreach to primary care practices, and provide trainings to health professionals. To capture this work, the 2022 annual update is broken down into two sections. The first section details the major 2022 programmatic accomplishments. Highlighted areas include:

- Strategic Planning
- 2022 Program Goal
- PCPlus Partnership
- Health Professionals Trained
- Program Coordinator
- Dental Referral List
- FTFT Newsletter

The second half of the report looks at the statewide impact of the program through 2021 MaineCare claims data.





PROGRAM HIGHLIGHTS



Strategic Planning

Over summer 2022, FTFT stakeholders, led by consultants from Integrative Inquiry, successfully engaged in strategic planning. The goal of the strategic planning process was to align the FTFT program with the current oral health landscape in Maine. Through the strategic planning process, FTFT updated its vision, mission, strategic approach, and identified 2-3 year goals. FTFT stakeholders also agreed the program will act as a supportive facilitator for the medical dental integration work being done by the Health Integration Action Team lead by the Children's Oral Health Network of Maine. In addition, FTFT will support program services for children ages birth up to 21 years. To view the full report, visit the About page on the FTFT website, www.fromthefirsttooth.org.

Vision

All Children in Maine have access to quality oral health care



Mission

To promote and support the integration of oral health into primary care for all children in Maine



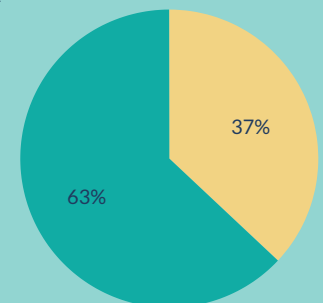
2022 Program Goal

FTFT achieved the 2022 program goal. The goal was to conduct either a virtual or in-person site visit with all primary care practices within the FTFT database that are either participating in the program, interested in re-engaging, or interested in initiating the program. Site visits assessed:

- Implementation, clinical champion, and electronic medical record integration status
- Data monitoring ability
- Oral health needs of pediatric patients
- Type of support needed from FTFT

FTFT staff contacted all practices within the FTFT database which is comprised of 293 primary care practices across the State serving pediatric patients. Over half of the practices responded. Of the practices that responded, 53 practices requested trainings.

Primary Care Practices Contacted



■ Contacted ■ Contacted & Responded

PCPlus Partnership

On July 1, 2022, MaineCare combined the value-based payment programs Primary Care Case Management, Health Homes, and Provider Incentive Program into one program, Primary Care Plus (PCPlus).

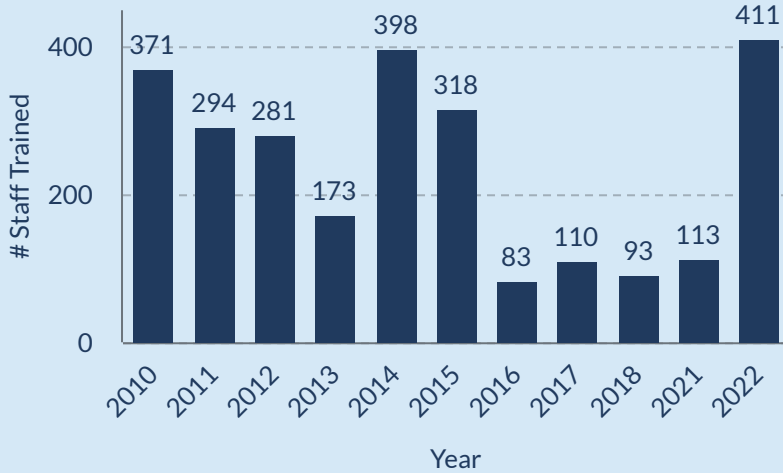
PCPlus moves away from a traditional fee-for-service model towards high quality, valued-based care. As part of PCPlus, all participating primary care practices are required to offer oral health assessment and fluoride varnish to pediatric patients ages 6-months to 21-years who do not have a dental home or have not seen a dentist in the past year.

From the First Tooth (FTFT) partnered with MaineCare to act as a technical assistance resource to help practices meet this requirement. Since the announcement of the final PCPlus rules in early April 2022, FTFT has provided trainings to 43 PCPlus practices across the state. FTFT looks forward to continuing this partnership in 2023.



PROGRAM HIGHLIGHTS

Health Professionals Trained



FTFT had an amazing year of training health professionals. In 2022, the largest number of health professionals were trained in the history of the program. Training reached health professionals from 15 of Maine's 16 counties and staff were taught using the Smiles for Life national curriculum. Health professionals engaged in meaningful conversations during the training, asking questions on the best way they can optimize the use of fluoride in caries prevention.

The trainings were a monumental collaboration effort between Northern Light Health and MaineHealth. A big thank you to FTFT partners and to the primary care practices that requested trainings.

Program Coordinator

Karissa Cass joined the FTFT team January of 2022 as part-time Program Coordinator. Previously, Karissa worked at the Portsmouth Naval Shipyard Childhood Development Center teaching preschool. She has been an incredible asset to the FTFT program and brings a wealth of knowledge on early childhood education. Karissa has also spearheaded updating the dental referral list, coordinating the FTFT newsletter, scheduling trainings, and fulfilling website orders for FTFT educational materials. She is an all-around ROCKSTAR!



Dental Referral List

Every six-months FTFT, in partnership with the Children's Oral Health Network of Maine, conducts outreach to dental providers across the state that see 100 or more pediatric patients. FTFT determines whether the practice is accepting new patients, if the practices accept patients with MaineCare insurance, and what the wait time is for non-emergency prevention appointment for children with MaineCare. The data collected is compiled into a dental referral list that is distributed to primary care providers serving pediatric patients.

Currently, there are 73 dental practices on the list and as of November 2022, 43 dental practices were actively accepting new MaineCare patients for preventive care appointments with a typical wait time of 6-months.



Debra Cass

Featured Dental Office

Mainly Teeth is a mobile dental clinic serving pediatric patients. Preventative, emergency, and restorative services are available to those with select insurances: MaineCare, Delta Dental, Cigna and Tricare. A sliding scale fee and free care is available to those who qualify.

Amber Lombardi, IPDH

Amber Lombardi is a graduate of the University of New England, a Master's of Public Health candidate at Southern New Hampshire University, and a member of the American Dental Hygiene Association. She understands the barriers many people face getting access to better care.

Amber Lombardi started Mainly Teeth to help community access to quality dental care. There's a large gap between private insurance and government-funded insurance. She wants to help close this equity gap by bringing care to homes for oral health care.

Amber works with her patients to create a plan to achieve dental and health. Her greatest hope is that her mobile clinic will make it more accessible for those in need. She's been working with children and has been providing care in Maine schools for the past year. Amber hopes to make every dental experience a positive one!

FTFT Newsletter

February 2022, FTFT relaunched a quarterly newsletter. The newsletters have featured information on opportunities to engage with the FTFT program, dental office providing excellent care to pediatric patients, medical dental integration models, MaineCare dental reimbursement information, and the latest oral health requirements from the MaineCare value-based payment program, PCPlus. If you are interested in subscribing to the FTFT newsletter, please reach out to mhfirsttooth@mmc.org.



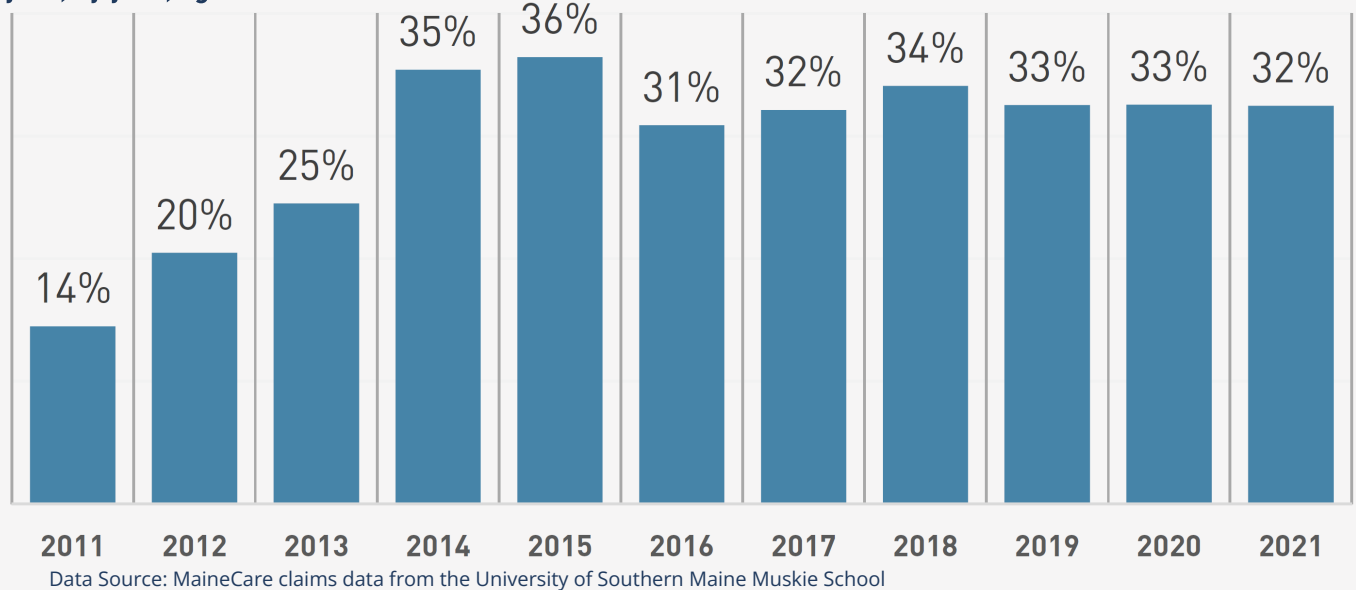
PROGRAM IMPACT



CHILDREN REACHED BY FTFT- MAINECARE

Figure 1 depicts the percent of children with MaineCare insurance ages 12-23 months with at least one well-child visit in a calendar year who have received at least one oral evaluation and/ or fluoride varnish in their primary medical care setting. After an initial increase this indicator has remained consistently in the low 30% range since 2016.

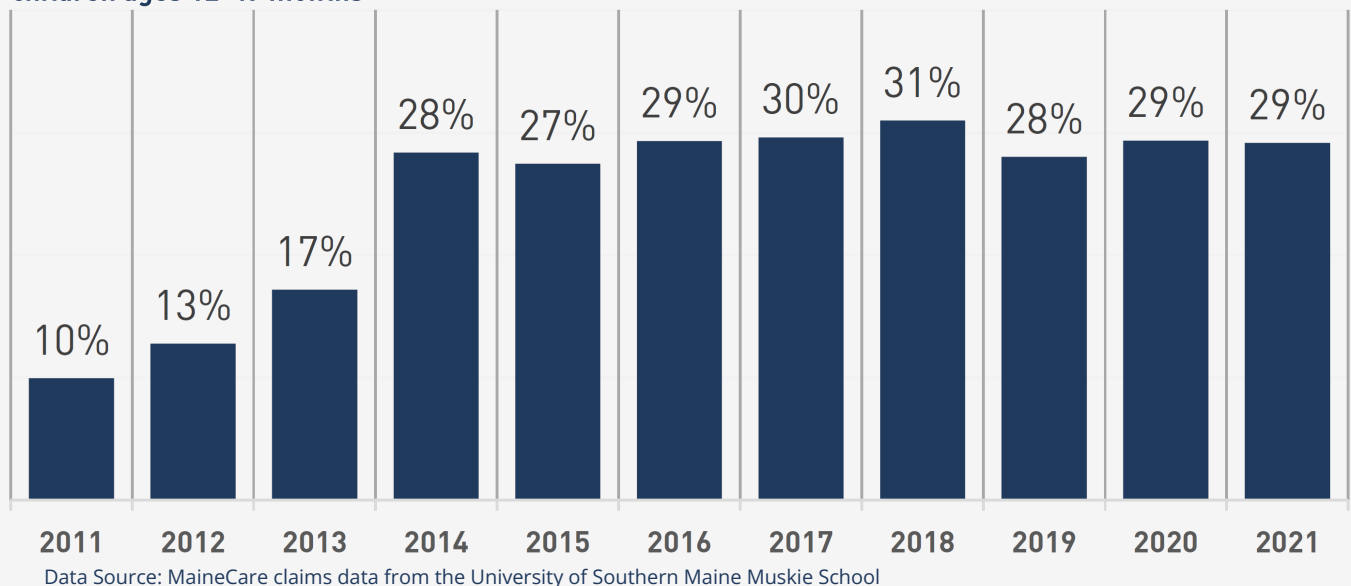
Figure 1. Percent of children reached by FTFT with at least one well-child visit in the measurement year, by year, ages 12-23 months



WELL-CHILD VISITS' MAINECARE

Figure 2 shows the percent of well-child visits with an oral health evaluation and/ or fluoride varnish for children ages 12-47 months from 2011 to 2021. Since 2014, the percentage of well-child visits with an oral health evaluation and/ or fluoride varnish continues to hold between 27-31%.

Figure 2. Percentage of well-child visits with an oral health evaluation and/ or fluoride varnish for children ages 12-47 months

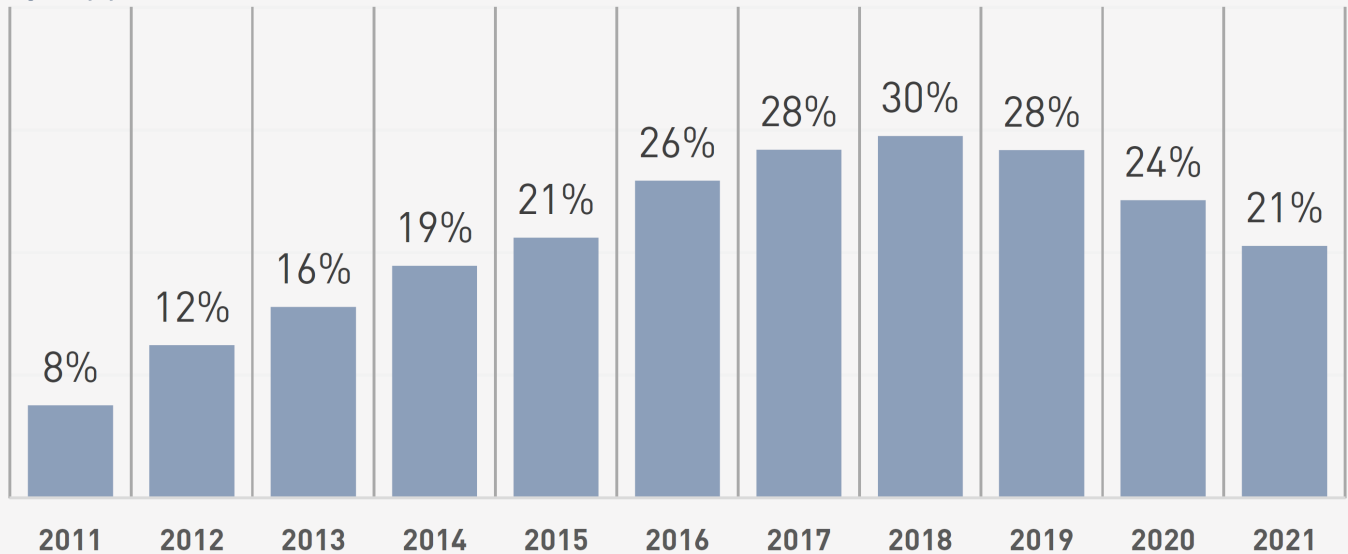


PROGRAM IMPACT

4 BY 4 - MAINECARE

Figure 2 represents the percent of children with MaineCare insurance who received at least four fluoride varnish applications by four years of age. This indicator steadily increased from 2011 to 2018. The recent decline (2019-2021) is likely due to the COVID-19 pandemic in part because many children have missed either well-child visits and/or dental visits. Thus, children may have had fewer opportunities to reach their 4th fluoride varnish before they turned age 4.

Figure 3. Percentage of children who have received at least 4 fluoride varnish applications by 4 years of age, by year

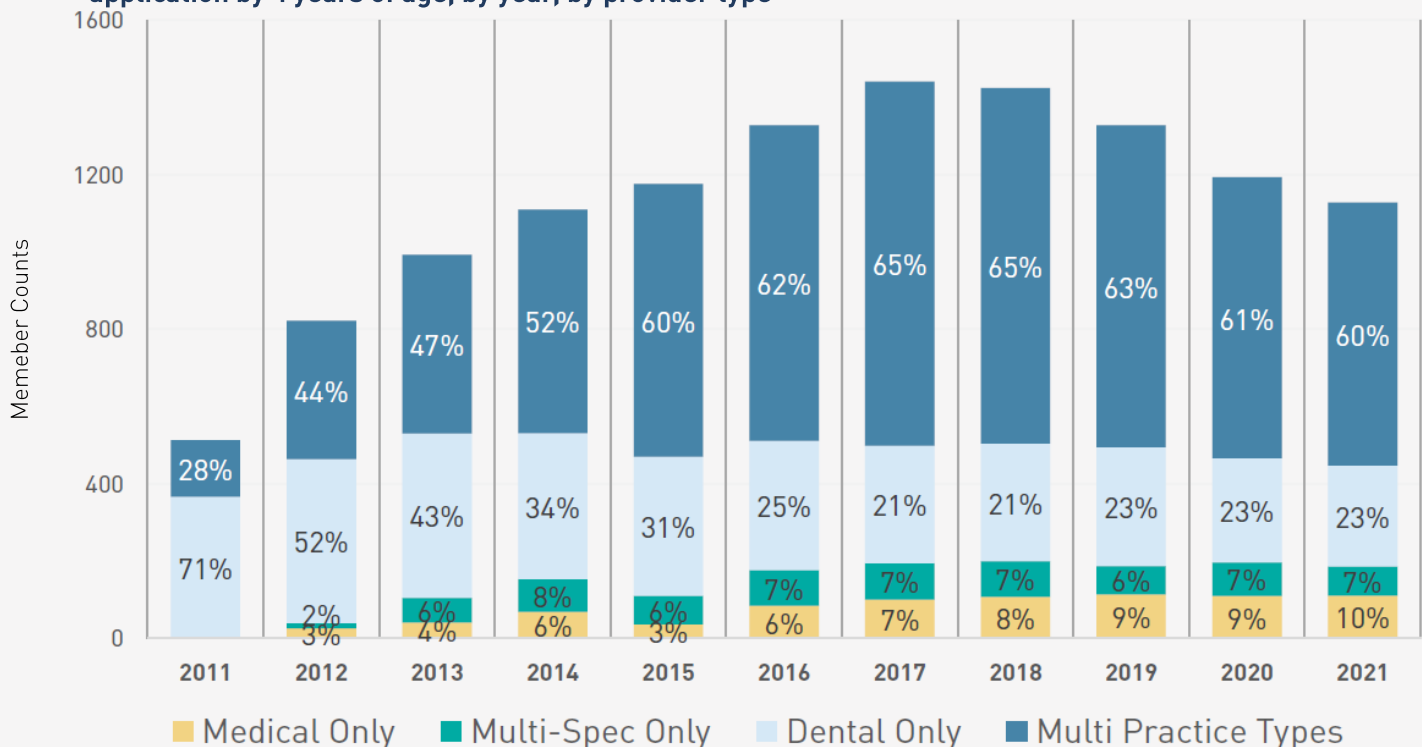


Data Source: MaineCare claims data from the University of Southern Maine Muskie School

FLUORIDE VARNISH APPLICATION BY PROVIDER TYPE

Figure 4 tracks the rates of fluoride varnish application from different settings as well as the number of MaineCare members who received 4 fluoride varnish applications by age 4. These data indicate that implementing FTFT's model of integrating preventive oral healthcare into pediatric primary care is making a difference in increasing access to fluoride varnish for young children.

Figure 4. Percentage of 4 year old MaineCare members who have received at least 4 fluoride varnish application by 4 years of age, by year, by provider type



Data Source: MaineCare claims data from the University of Southern Maine Muskie School

KEY CONTRIBUTORS

STAFF

MAINEHEALTH

Karissa Cass
Program Coordinator

Lyvia Gaewsky
Program Manager

Naomi Schucker
Senior Director, Community Health

CONTACT: mhfirsttooth@mmc.org

IMPLEMENTATION PARTNERS

Northern Light Health

Kellie Stanhope
Program Coordinator

Jessica Shaffer
Director, Community Health Partnerships

MaineGeneral

Jeff Stone, MD
Pediatrician

Samantha Walsh
Clinical Integration Program Coordinator

Maine Primary Care Association

Beth Pearce
Oral Health Program Manager

Maine Chapter American Academy of Pediatrics

Dee Kerry
Executive Director

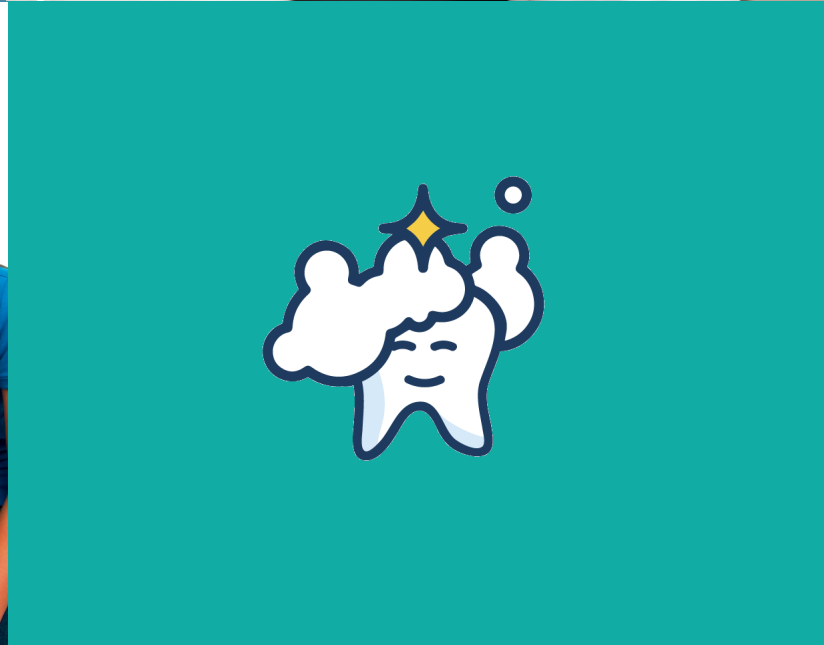
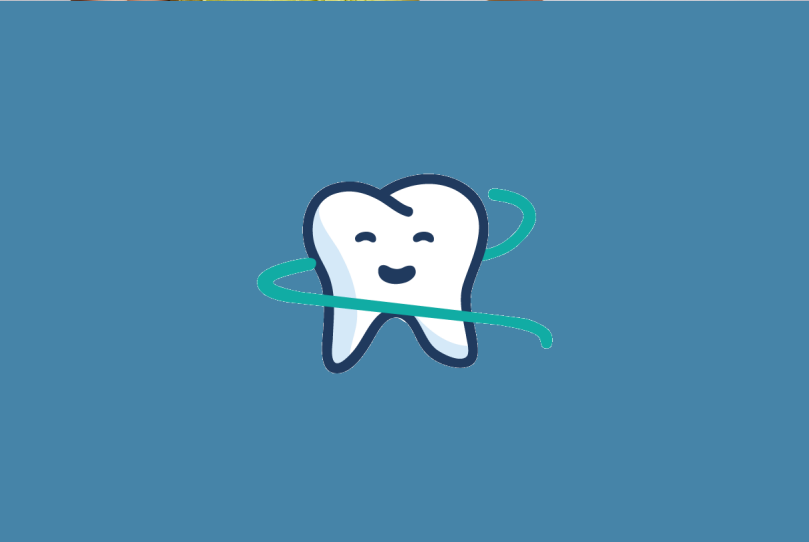
MCD Global Health

Courtney Vannah
Program Manager Oral Health Initiatives

Children's Oral Health Network of Maine

Becca Matusovich
Executive Director





MaineHealth

WWW.FROMTHEFIRSTTOOTH.ORG