

From the First Tooth is a pediatric oral health initiative promoting the oral health of infants, toddlers and preschool children.



FTFT

MaineHealth

WWW.FROMTHEFIRSTTOOTH.ORG



FROM THE FIRST TOOTH
HEALTHY SMILES FOR LIFE



ANNUAL REPORT

... 2017 ...

FUNDED BY

THE

SADIE AND HARRY DAVIS
FOUNDATION

DentaQuest
FOUNDATION

The logo for Delta Dental, featuring a white triangle icon to the left of the text "DELTA DENTAL" in white, all contained within a green rectangular background.

DELTA DENTAL

NORTHEAST DELTA DENTAL

From the First Tooth is led and administered by MaineHealth and implemented in partnership with MaineGeneral Health, EMHS, and other partners.

A MESSAGE FROM THE DIRECTOR

2017 marks the ninth year of statewide implementation of From the First Tooth, an initiative that seeks to improve the oral health for all infants and young children in Maine. Generously funded by the Sadie and Harry Davis Foundation, From the First Tooth focuses on integrating oral screenings, fluoride varnish, health education, and recommendations for initial dental visits into primary care settings, where most young children receive regular preventive care.

Over the course of the almost-decade, steady progress has been made to increase the number and percentage of Maine children reached, thanks to our many partners and collaborators, including MaineGeneral Health, EMHS, and Quality Counts, among others. MaineHealth is proud to be the leader and administrative home of FTFT for this entire time period.

The 2017 Annual Report looks back on the past year (January 2017 – December 2017) and highlights major accomplishments as well as progress to date on goals and key outcomes and measures.

On behalf of the entire FTFT team, we are grateful for the strong support of hundreds of primary care practices and providers throughout Maine, parents and family members, dental professionals, and community organizations that have made the achievements described in this report possible.

Laura Robbins,
Director, FTFT
MaineHealth



TIMELINE

From the beginning, From the First Tooth has aimed to improve the oral health of Maine children from the eruption of the child's first tooth through 47 months of age, by implementing an evidence-based preventive oral health intervention. The initiative expanded in 2015 to include perinatal oral health as a result of receiving a four year grant from Health Resources and Services Administration.

PHASE ONE

PILOT

WHEN

2008–2009

WHO

Sadie and Harry Davis Foundation (SHDF)

WHERE

6 Organizations, 17 Sites

TARGET

Children, birth – 3.5 years

FUNDING SOURCE

SHDF

PHASE TWO

FROM THE FIRST TOOTH

WHEN

2010–Present

WHO

MaineHealth in partnership with Maine-General Health and EMHS for state-wide impact

TARGET

Children, birth – 4 years

FUNDING SOURCE

SHDF, DentaQuest, Northeast Delta Dental

PHASE THREE

BEFORE THE FIRST TOOTH

WHEN

2015–2019+

WHO

MaineHealth in partnership with MaineGeneral Health

TARGET

Children, birth – 4 years AND perinatal women

FUNDING SOURCE

Health Resources and Services Administration (HRSA)

WHAT

Expansion of From the First Tooth to reach perinatal women and infants

This annual report includes only pediatric focused work funded by the SHDF and NEDD in 2017

LAYING THE GROUNDWORK

2017 was a year of planning, growth and development focused on engaging parents, caregivers, providers, and community partners.

WEBSITE

The From the First Tooth website received a facelift in 2017. Feedback from providers and consumers revealed that the former website was challenging to navigate and lacked a contemporary look and feel. The updated website features improved functionalities and easy to access resources and materials. Please visit: www.fromthefirsttooth.org

BRAND MATERIALS

After conducting an inventory of From the First Tooth educational materials, it became clear that the trifold, rack card, waiting room poster, and physicians' checklist needed some updating. The updated materials are fresh and easy to read, delivering important oral health information to parents and caregivers.

VIRTUAL TRAINING

As From the First Tooth plans for sustainability, project staff worked with Smiles for Life to develop an on-line/web based tool [virtual training](#). The training was created so all Maine clinical practice staff have the accessibility and flexibility to take advantage of oral health training resources at their convenience, and will enable previously trained practices to retrain, train new staff and/or add to clinical competency trainings.

HEALTHY SMILES 2020 CHALLENGE

This statewide [Challenge and Recognition](#) program aims to increase the number of children ages 6-48 months who receive a fluoride varnish at their primary care visits. All pediatric and family medicine practices in Maine are invited to participate in this friendly clinically-based competition that will ultimately result in improving children's oral health.

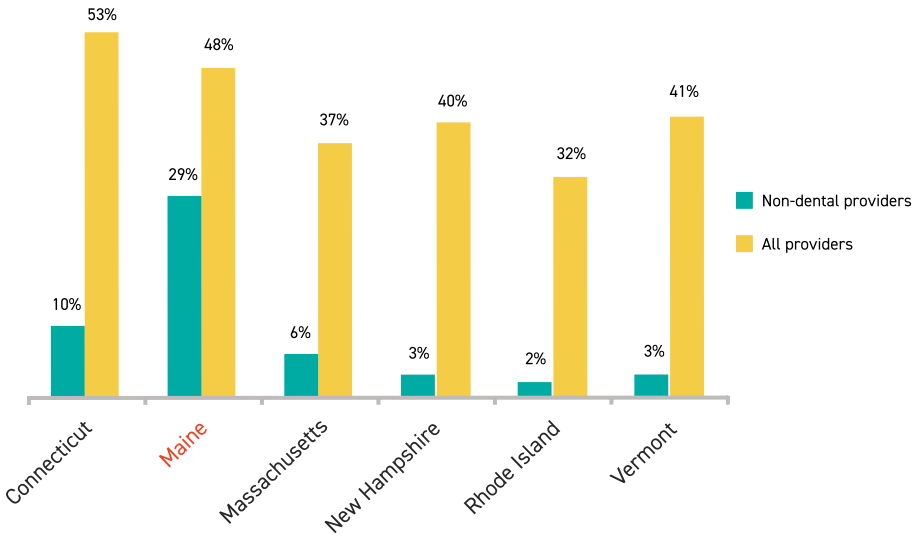


EDUCATION AND OUTREACH

Six New England states collaborated to study the impact of training primary care practices and providers on the oral health status of young children. In an article published in the [American Association of Public Health Dentistry - June 2017](#), Maine had the greatest percentage of dental services from non-dental providers among the six states.

A MULTI-STATE INITIATIVE TO IMPLEMENT PEDIATRIC ORAL HEALTH IN PRIMARY CARE PRACTICE AND CLINICAL EDUCATION

Hugh Silk, MD, MPH, FFFP¹; Ellen Sachs Leigher, MAHCA²; Vernoica Alvarado, BS²; Elizabeth Cote, RDH, MS³; Susan Cote, RDH, BS⁴



Percent of children on Medicaid who received dental services, 2015 New England CMS 416 data.

PRACTICES TRAINED
IN 2017

13

PRACTICES RETRAINED
IN 2017

13

CLINICAL/PRACTICE STAFF
TRAINED IN 2017

162

PRACTICES TRAINED
SINCE 2008

214

CLINICAL/PRACTICE STAFF
TRAINED SINCE 2008

2,479

MATERIALS DISTRIBUTED
IN 2017

7,000+

PRESENTATIONS

SOUTH PORTLAND, ME

MAINE CHAPTER OF THE AMERICAN ACADEMY OF PEDIATRICS CONFERENCE

*"Oral Health-Obesity and
Food Insecurity"*

Target Audience: Pediatricians

NOVEMBER 2017 – ATLANTA, GA AMERICAN PUBLIC HEALTH ASSOCIATION ANNUAL CONFERENCE

*"Integrating Oral Health Performance
Measures into Primary Care"*

Target Audience: Public Health Professionals

NOVEMBER 2017 – BARTLETT, NH NEW ENGLAND RURAL HEALTH CONFERENCE

*"Oral Health Quality Improvement
through Transparent Data"*

Target Audience: Public Health Professionals

WEBINARS

AUGUST 8, 2017 – 125 PARTICIPANTS

*"Addressing Oral Health in Pediatric Care-
Good, Better, Best! With Hugh Silk, MD,
MPH"*

Target Audience: All clinical staff, public health
professionals and educators.

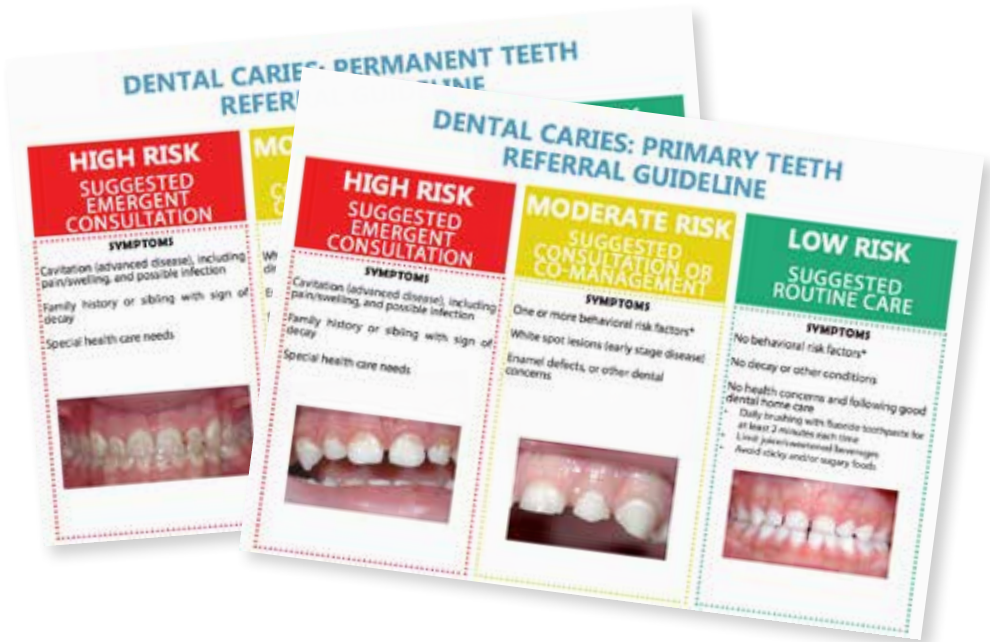
DECEMBER 12, 2017 – 78 PARTICIPANTS

*"Using Health Literacy to Improve
Children's Oral Health with
Alice Horowitz"*

Target Audience: All clinical staff, public health
professionals and educators.

PEDIATRIC REFERRAL GUIDELINES

From The First Tooth partnered with MaineHealth Accountable Care Organization to create [Pediatric Referral Guidelines](#) to improve communication across the medical neighborhood through standardization of pediatric specialty referrals. A total of four printed guidelines and two videos were developed focusing on dental trauma and dental caries for both primary and permanent teeth.



VIRTUAL TRAINING

This 45 minute Early Childhood Caries Prevention in Primary Care video reviews early childhood caries, the use of fluoride as part of a comprehensive approach to a child's oral health and clinical workflow examples to assist with the integration of this evidence based invention within Well Child visits. The [FTFT Virtual Training](#) was launched in July 2017.

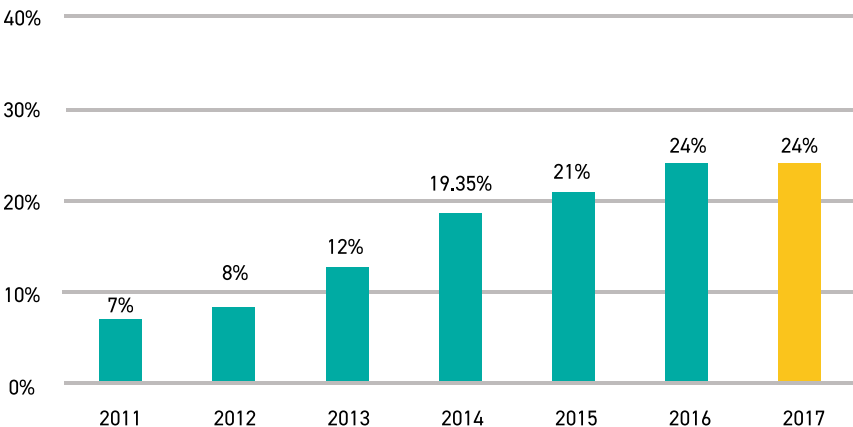


“The percent of well child visits with an oral evaluation and/or fluoride varnish increased from 7% in 2011 to 24% in 2017”

WELL CHILD VISITS – MAINECARE

Definition: Percent of well child visits with an oral evaluation and/or fluoride varnish for children ages 12-47 months. The percent of well child visits with an oral evaluation and/or fluoride varnish increased from 7% in 2011 to 24% in 2017.

WELL CHILD VISIT – PERCENT OF WELL CHILD VISITS WITH AN ORAL EVALUATION AND/OR FLUORIDE VARNISH FOR CHILDREN 12 – 47 MONTHS



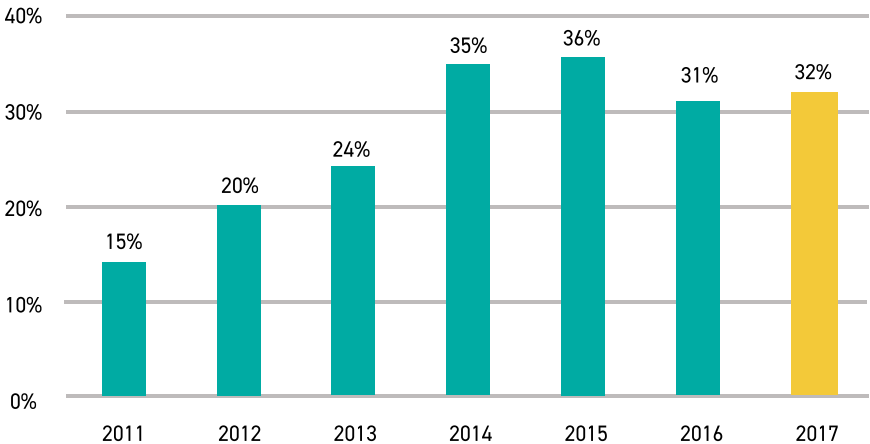
Data source: MaineCare claims data from the University of Southern Maine Muskie School.



CHILDREN REACHED BY FTFT - MAINECARE

Definition: Percent of children ages 12-23 months with at least one well child visit in a calendar year who have received at least one oral evaluation and/or fluoride varnish in their primary medical care settings. The percent of children ages 12-23 months with at least one well child visit in a calendar year who have received at least one oral evaluation and/or fluoride varnish increased from 15% in 2011 to 36% in 2015 but declined to 32% in 2017.

CHILDREN REACHED – PERCENT OF CHILDREN REACHED BY FTFT WITH AT LEAST ONE WELL CHILD VISIT IN THE MEASUREMENT YEAR, BY YEAR, AGES 12 - 23 MONTHS

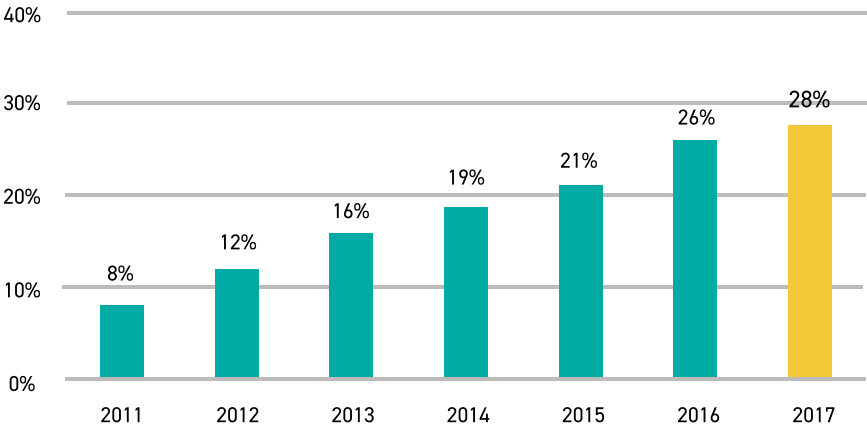


Data source: MaineCare claims data from the University of Southern Maine Muskie School.

4 BY 4 – MAINECARE

Definition: Percent of children who have received at least four fluoride applications by four years of age. The percent of children who received at least four fluoride applications in any setting increased from 8% in 2011 to 28% in 2017.

4X4 – PERCENTAGE OF CHILDREN WHO HAVE RECEIVED AT LAST 4 FLUORIDE APPLICATIONS BY 4 YEARS OF AGE, BY YEAR



Data source: MaineCare claims data from the University of Southern Maine Muskie School.

DINING WITH DENTISTS

Dining with the Dentist events aim to link dental and medical professionals within a community or region together to increase appropriate referrals and coordinate the physical and oral health of very young children (ages birth-age 4) and pregnant women. Three events were held in 2017.

| Community | Date | Medical Staff | Dental Staff | FTFT Staff | Other | Total |
|---------------|----------|---------------|--------------|------------|-----------|-----------|
| Auburn | 10/26/17 | 2 | 11 | 1 | 9 | 23 |
| Augusta | 1/16/17 | 2 | 2 | 1 | 1 | 6 |
| Bangor (EMMC) | 11/8/17 | 21 | 2 | 1 | / | 24 |
| Totals | | 25 | 15 | 3 | 10 | 53 |

KEY CONTRIBUTORS

STAFF

MAINE HEALTH

Laura Robbins, CHES

Director, From the First Tooth

Susan Cote, RDH, MS

Program Manager, From the First Tooth

Julie Carvelli, BA

Program Coordinator, From the First Tooth

Gina McKenney, MPH

*Program Manager
Before the First Tooth*

PARTNERS

MAINEGENERAL HEALTH

Laura Mrazik, MPH, CHES

*Director, Accountable Care
Population Health Management*

Wendie Lagasse, MCHES

*Public Health Specialist, Center for
Prevention and Healthy Living*

EMHS

Douglas Michael, MPH

Chief, Community Health & Grants Officer

Jessica Shaffer

Director, Community Health Partnerships

Katherine Bartley, MPA

Program Manager

Kellie Stanhope, RDH

Program Coordinator & Trainer/Educator

CLINICAL ADVISORS

Jennifer Dubail, MD

*Pediatrician, Maine Medical Partners
(MMP)*

Jeff Stone, DO

*AAP Maine Chapter, Oral Health Advocate
Pediatrician, Waterville Pediatrics*

NATIONAL ADVISORS

Raul Garcia, DMD, MMSc

*Boston University, Goldman School of
Dental Medicine*

Burton Edelstein, DDS, MPH

*Columbia University, College of Dental
Medicine*

Gary Rozier, DDS, MPH

*University of North Carolina, Gillings
School of Global Public Health*



ADVISORY COMMITTEE MEMBERS

Andrew Kingenstein

President, Sadie and Harry Davis Foundation

Barbara Crowley, MD

Executive Vice President, MaineGeneral Health Chairperson, From the First Tooth Advisory Committee

Deborah Deatrck, MPH

Senior Vice President, MaineHealth

Demi Kouzounas, DMD

*General Dentist, Dunstan Dental
Past President, Maine Dental Association*

Evelyn deFrees

*Executive Director,
Sadie and Harry Davis Foundation*

Ginger Roberts-Scott, LSW, CPC

*Former Maine DHHS,
Office of MaineCare
Services*

Judith Feinstein, MSPH

Former Director, Maine DHHS, Oral Health Program

Stephen Mills, DDS

*Pediatric Dentist, Just for Kids
Pediatric Dentistry*

Sharon Rosen, PhD

Former Executive Director, Sadie and Harry Davis Foundation

Kelley Bowden, MMC

*Perinatal Outreach
Nurse Educator*

FROM THE FIRST TOOTH COLLABORATORS

DentaQuest Foundation –
New England States Collaborative

EMHS

HeadStart

NorthEast Delta Dental

MaineGeneral Health

MaineHealth Accountable
Care Organization

Maine Quality Counts

Maine Chapter of the American
Academy of Pediatrics

Maine Dental Association

Maine Dental Hygienist Association

Maine Families

Maine Oral Health Coalition

Maine Primary Care Organization

Perinatal and Infant Oral Health
Quality Improvement

University of New England
Dental School

University of Southern Maine Muskie
School of Public Service

Women, Infants, and Children (WIC)